

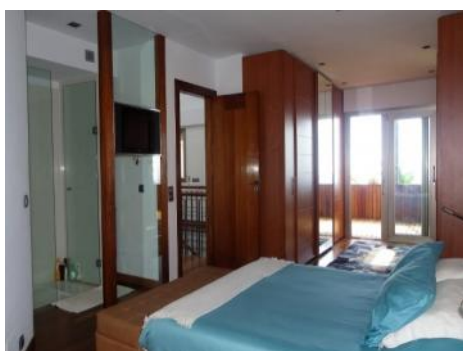
Tabaiba

search for property TEN-200090



Exclusive modern villa with heated pool and high quality equipment in Tabaiba

constructed area:	-	swimming pool:	✓
plot area:	609 m ²	energy certificate:	in process
bedrooms:	3		
bathrooms:	2		
sea view:	✓	price:	€ 750,000.-



Tabaiba

search for property TEN-200090



Details:

This high quality villa with double chamber walls and intermediate insulation is located with excellent view in the popular residential area Tabaiba, near the famous German School Santa Cruz de Tenerife (DST). The sea view extends over the coast and across to Candelaria and Güimar. On the motorway it takes only a few minutes to Santa Cruz, the beaches and the tourist areas of the south can be reached easily as well. Below the settlement there is the new marina with its newly created beaches.

The modern estate, built in 1992 fits beautifully into the scenery with its natural stone walls of basalt. The construction area of 329 m² includes two floors of 112 m² and 153 m² as well as 50 m² in the area of the garage and 14 m² with a separate building in the garden.

The lower floor of the villa offers with a generous design the living room with dining area, the large bright kitchen with water filtration and also plenty of space for dining, a large covered patio right next to it, an utility room and a guest toilet. A chimney in the living room with a large heat storage area and air circulation provides comfort, the glazed oriel creates a special ambience.

Upstairs there are four bedrooms and two bathrooms. Two of the bedrooms are situated right on a panoramic terrace with partly transparent canopy. Elegant is the design of the master bedroom with glass partition of the shower cubicle in the bath en-suite and built-in television, as well as the patio between the bedrooms, which is dominated by a high vault.

The high-quality equipment also includes inter alia aluminium windows and aluminium patio doors with double-glazed panes of safety glass with tilt and turn function, thermal insulation also in the ceilings, air conditioning on both floors with dual function for cooling and heating, sound system in the whole house and as well as on the terrace, electric security roller shutters, wooden fittings from Maciza de Iroko, floors of natural slate in the living and dining room and Iroko parquet on the upper level, also high-quality wood flooring on the upper covered terrace as well as the installation of a video projector for the cinema effect.

The terrace next to the kitchen can be enjoyed closed as well as opened by sliding open the ceiling-high window front. It leads into the garden, the large terrace with granite tiles, the pool, heated by solar panels, and into a stylish separate cottage directly on the pool, which is currently used as an office.

The swimming pool with gressite-ceramic lining is automatically supplied with an adequate salt content and also pH-controlled. Next to the double garage there is a storage room; besides it exists enough space for a third car on the property which is secured by an electric gate.

Tabaiba

search for property TEN-200090



Location & surrounding area:

El Rosario in the north-east of Tenerife as a direct neighbor of the capital Santa Cruz de Tenerife is popular in many respects. For commuters, or to enjoy culture and gastronomy, it is a short way into the city. Because of its location near the junction of the three highways in Tenerife, there are fast connections to the north coast, to San Cristobal de la Laguna, the Anaga mountains or on the TF 1, extending straight along the south coast, to the centers near the southern airport Reina Sofia.

So especially the places near the coast have shown a dynamic development. In Radazul water sports enthusiasts get their money's worth: A marina is located at the foot of the villas and tourist areas. Directly adjacent, newly designed beaches for sunbathing, swimming and snorkeling complement this area, which is used for water skiing, kite and wind surfing or paragliding. Many caves and crevices with a rich marine life make Radazul also one of the best dive sites in Tenerife.

Other sought-after areas for houses and apartments are located in Barranco Hondo and Tabaiba. In the area above the highway, in Tabaiba Alta, the renowned German School, sponsored by the Goethe Institute, is a central point of contact with international flair.

In the heights of El Rosario is the administrative center of the community, La Esperanza. From here the road on the Cumbre leads up to the Mount Teide National Park. On both sides of the road there are many hiking trails and beautiful spots to enjoy the pine forests of the island.

Tabaiba

search for property TEN-200090



PORTA MONDIAL®

Your home. Our passion.



Spacious living and dining area



Bedroom with access to the panoramic terrace



High-quality, bright kitchen



Fantastic panoramic view of the sea and the mountains



Swimming pool invites you to relax



Further bedroom with access to the large terrace

Tabaiba

search for property TEN-200090



PORTA MONDIAL®

Your home. Our passion.



Staircase with high ceiling



Large, covered terrace



Panorama terrace offers plenty of space



View to the spacious terrace and the sea