

## Cas Concos

search for property MAL-120863

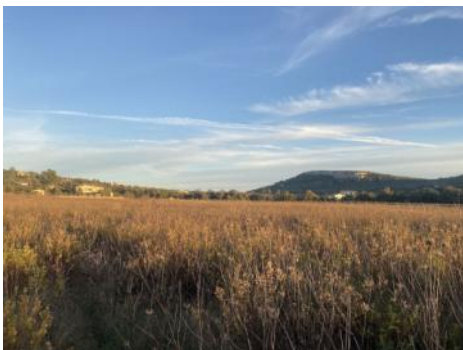


PORTA MONDIAL®

Your home. Our passion.

## Unique country estate with approved building project and stunning panoramic mountain views near Cas Concos

plot area:	30.113 m <sup>2</sup>	water:	-
sea view:	-		
dev. Potential:	-		
building permit:	-		
electricity:	-	<b>price:</b>	<b>€ 1,500,000.-</b>



Cas Concos

search for property MAL-120863



## Details:

Amidst the charming hilly landscape, this dreamy estate spans approximately 30,000 square meters near Cas Concos. Despite its utterly tranquil location, you can reach the quaint villages of Cas Concos, S'Alquería Blanca, or Santanyí in just a few minutes.

The property stands out for its approximately 1.6 hectares of cultivated vineyards and a breathtaking panoramic view of the mountains. You can relish in unique sunsets from the grounds.

What makes this property special is that it already has a project and building permit in place for a Finca according to old construction regulations.

The plan entails a spacious, two-story Finca in Mediterranean style. The ground floor is designed to feature a cozy living area, a spacious dining area with an integrated kitchen, along with three bedrooms each with an en suite bathroom.

On the upper floor of the Finca, there will be another living area and two double bedrooms, each with an en suite bathroom. Both bedrooms will have access to a large terrace offering splendid panoramic views.

A beautiful retreat will be a romantic patio with a proposed pond. Additionally, a double garage and various storage rooms are planned.

The entire property is enclosed by a dry stone wall. Furthermore, the property benefits from a well. Connection to the public power grid is possible.

We would be delighted to assist you in selecting a suitable architect and a reputable construction company. Please do not hesitate to contact us!

# Cas Concos

search for property MAL-120863



## Location & surrounding area:

The pristine village of Cas Concos together with the villages of S'Alquería Blanca and Santanyí create the famous triangle called „Hill of Hamburg“, a scenic region, where initially artists and patrons seeking for calm fulfilled their dream of a life in the sun. Cas Concos is well known for craftsmanship and the galleries. There are also shops and restaurants for the daily needs.

The beautiful market town of Santanyí with restaurants and boutiques as well as numerous small bays in the southeast of the island are only an approx. 15-drive away.

Cas Concos  
search for property MAL-120863



Plot



Plot



Plot



Plot



Plot



Plot

# Cas Concos

search for property MAL-120863



PORTA MONDIAL®

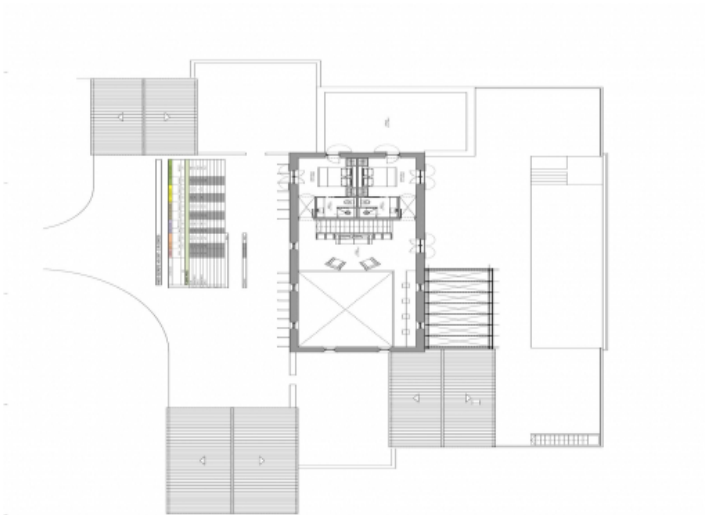
Your home. Our passion.



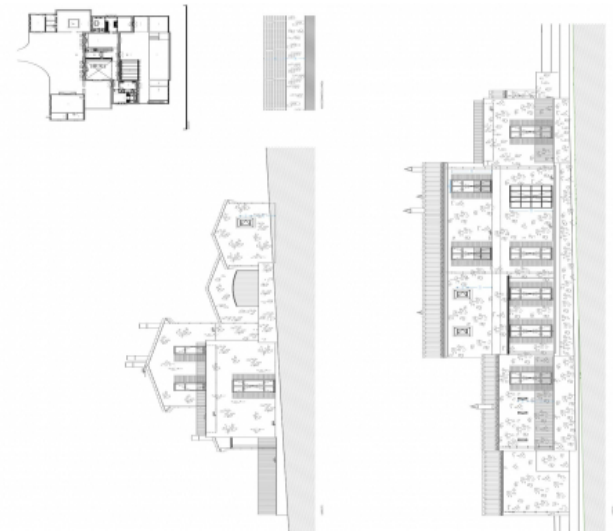
Plot



Construcion plan



Construcion plan



Construcion plan