

Güímar

search for property TEN-107897



PORTA MONDIAL®

Your home. Our passion.

Unique finca in a privileged location near Güímar with spectacular views and tremendous possibilities

constructed area:	615 m <sup>2</sup>	energy certificate:	in process
plot area:	8.111 m <sup>2</sup>		
bedrooms:	4		
bathrooms:	3		
sea view:	✓	price:	€ 627,900.-



**Güímar**

search for property TEN-107897



## Details:

This 8.000 sqm finca is tranquilly situated in Güímar, although close to all facilities and only a few minutes from the motorway. It offers a unique opportunity to acquire a property consisting of a large, flat plot of agricultural land, a large residential house, and a separate casita-cottage.

The property has its own water cistern which is fed by both rainwater and normal supply, and is completely surrounded by a high, modern and elegant wall guaranteeing privacy and security.

An electrically-controlled gate gives access to the finca, and the visitor is greeted by a charming little house of 40 sqm, perfect for conversion as a studio or guest house, with a kitchen, a bathroom and a cellar.

Only 100 metres away is the main house with an area of 375 sqm, which was recently renovated and is fitted with parquet flooring. It is characterised by its versatility, offering diverse possibilities due to a 150 sqm cellar with storage rooms, and its 3 independent entrances and 3 independent apartments.

The first dwelling consists of a bright, spacious living room with high ceilings, a bathroom and a room ideal for use as an office or bedroom and which has access to a terrace.

The 2nd. house has a living room, a separate kitchen with sea views, and a shower-bathroom. On the upper floor a large bedroom opens on to 2 terraces overlooking the entire property with views of the mountains and the sea.

The 3rd house is distributed over a large living room with access to a covered terrace also with views over the property and the sea, a separate kitchen with mountain views, a bathroom and 2 bedrooms.

In the main house is the old wine cellar, and several storage rooms with natural light offering ample additional space.

Should you require further information on this very special finca in its tranquil and natural surroundings with great privacy and spectacular views, although located at an altitude of only 200 metres, then please do not hesitate to contact us.

**Güímar**

search for property TEN-107897



## Location & surrounding area:

Güímar is easily accessible from Tenerife South Airport, slightly more than halfway to the provincial capital Santa Cruz de Tenerife. The place is an important economic centre in the south-east of the island. This also applies to tourism: a much-visited attraction, the Pyramids of Güímar, have become known by Thor Heyerdahl, who saw a connection here to the cultures in South America,. Today has been proven that the pyramids originate from the 19th century, but the unresolved questions about the purpose of the buildings still cause a lot of interest. With over three hundred year old churches Iglesia del Convento de Santo Domingo and Iglesia de San Pedro, which is the starting point of an annual pilgrimage, Güímar also has important religious monuments.

There is a beautiful sandy beach at Puerto de Güímar, where good seafood restaurants around the port welcome their visitors. Between Puerto de Güímar and the northerly Socorro is the Malpais of Guimar, created by volcanic eruptions from a tuff cone about 10,000 years ago and offering an impressive and unique landscape with botanical and geological diversity. Hiking trails run through this relatively flat, pristine area. But also above Güímar is a remarkable landscape, with both fincas for agriculture as well as easy to enjoy. Several roads lead up to the crest of the Cumbre Road, which runs in the Corona Forestal, the beautiful pine forest of Tenerife, with connections in the Teide National Park and San Cristobal de La Laguna.



Güímar

search for property TEN-107897



PORTA MONDIAL®

Your home. Our passion.



Views



Guest house



Views



Views



Garden



Living area



Güímar

search for property TEN-107897



PORTA MONDIAL®

Your home. Our passion.



Living area



Living area



Living area



Living area



Living area



Living area and dining area



Güímar

search for property TEN-107897



PORTA MONDIAL®

Your home. Our passion.



Kitchen



Kitchen



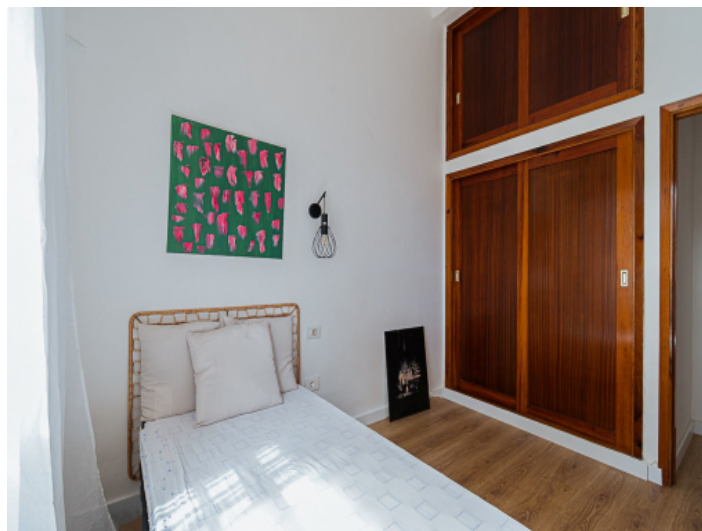
Bedroom



Bedroom



Bedroom



Bedroom



Güímar

search for property TEN-107897



PORTA MONDIAL®

Your home. Our passion.



Bathroom



Bathroom



Bathroom



Basement



Basement