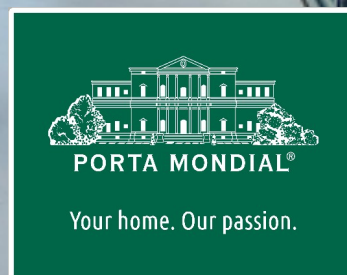


Establiments

search for property MAL-122553



Bright villa with a large garden and a saltwater pool in Establiments

constructed area:	450 m ²	energy certificate:	in process
plot area:	1.000 m ²		
bedrooms:	5		
bathrooms:	5		
sea view:	-	MIETPREIS:	€ 7,500.-:



Establiments

search for property MAL-122553



Details:

This modern and bright detached family home is located in Establiments, just a 15-min drive from Palma's city centre. Set in a peaceful area surrounded by nature, it offers beautiful open views of the Tramuntana mountains—an ideal choice for those seeking a calm environment without giving up proximity to the city.

The property sits on a plot of around 1,000 sqm with landscaped gardens, several terraces, and a saltwater swimming pool with wonderful panoramic views. It also features a barbecue area, a children's play area and a sun deck. Several outdoor parking spaces are available on the grounds.

The house offers approximately 450 sqm of constructed area distributed over 3 floors. The ground floor includes a spacious living-dining area with large windows, a kitchen, one double bedroom and a bathroom. The first floor features an additional living area, 3 generous double bedrooms and 3 bathrooms, all filled with natural light and enjoying lovely views.

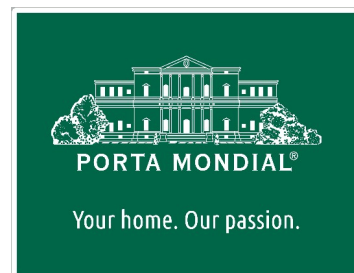
The basement level provides a games room, 2 additional rooms, a bathroom, a laundry room and a technical room—perfect for guests, hobbies or a home office.

The property comes equipped with ducted hot/cold air-conditioning, underfloor heating, a fireplace and a home-automation system with automatic shutters.

A home that stands out for its generous space, tranquility and the perfect blend of modern comfort and natural surroundings.

Establiments

search for property MAL-122553



Location & surrounding area:

Establiments is a popular and still-authentic Mallorcan village which adjoins the north-east of the island capital. Most of the buildings there are detached houses. Due to its former independence Establiments offers the complete infrastructure of a village including schools, shopping possibilities, bars and restaurants, and apart from that has perfect connections to the town centre.

Establiments

search for property MAL-122553



PORTA MONDIAL®

Your home. Our passion.



Pool terrace



Pool and mountain views



Living area



Dining area



Kitchen



Entrance to living area

Establiments

search for property MAL-122553



Bedroom



Bathroom



Bedroom



Living area first floor



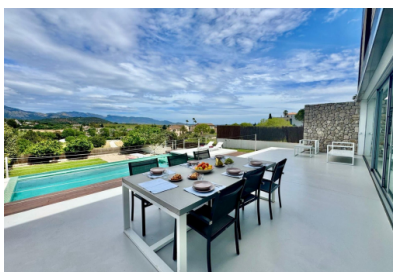
Bathroom with shower



Front view

Establiments

search for property MAL-122553



PORTA MONDIAL®

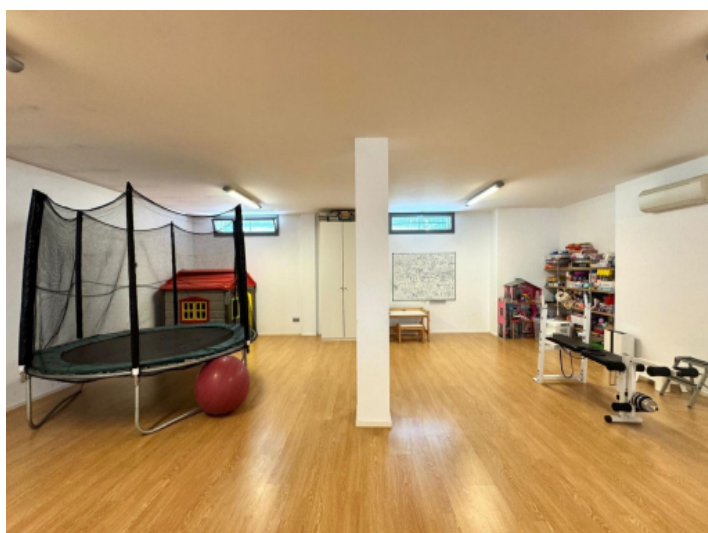
Your home. Our passion.



Entrance



Pool area



Lower ground floor