

Son Armadams

search for property MAL-122298



PORTA MONDIAL®

Your home. Our passion.

Modern townhouse in Son Armadams – Exclusive location near Santa Catalina, available from August 1st

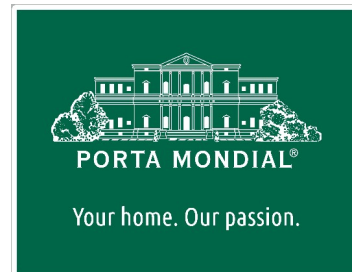
constructed area:	284 m ²	energy certificate:	in process
bedrooms:	4		
bathrooms:	2		
sea view:	-		

MIETPREIS: € 7,000.-:



Son Armadams

search for property MAL-122298



Details:

This modern townhouse is located in the popular and quiet neighborhood of Son Armadams, just a short walk from the vibrant district of Santa Catalina with its many restaurants, cafés, and boutiques. Bellver Castle, Pueblo Español, the marina, and several supermarkets are also within easy walking distance – ideal for relaxed yet urban living.

The house is a true architect-designed home: very modern, thoughtfully planned, and finished with high-quality materials. Particularly striking is the large window front, which lets in plenty of natural light and creates a bright, open atmosphere. The interior gallery enhances the sense of space and elegantly connects the different levels.

The living area is spread over three floors plus a basement level. On the ground floor, you'll find the bright living room, dining area, kitchen, and a guest toilet. Both the living room and kitchen open directly onto the spacious terrace, which offers plenty of room to relax or enjoy cozy barbecues with friends and family.

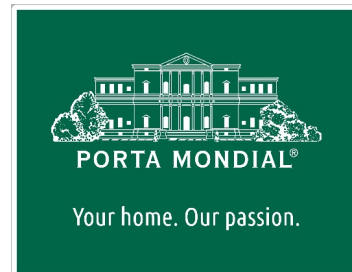
The house offers a total of four bedrooms. On the top floor, there are two bright bedrooms, a bathroom, and a cozy TV area with a sofa – perfect as a retreat for children or guests. One floor below is the generous master bedroom with en-suite bathroom and lots of privacy. In the basement, there are also two additional beds, ideal for hosting extra guests.

Residents have access to a well-maintained communal pool. A garage, air conditioning, and a laundry room complete the offer.

The property is rented fully furnished and move-in ready, available from August 1st. In total, the house accommodates up to ten people – perfect for families or holidays with friends.

Son Armadams

search for property MAL-122298



Location & surrounding area:

If you are looking for a green but centrally-situated area in the town of Palma de Mallorca then Son Armadams is the place for you. The district is surrounded by a wonderful park on a hill which leads to Bellver castle from where breathtaking views over the whole of the bay of Palma can be enjoyed. The park is also an ideal place for all types of outdoor activities, and in the inner courtyard of the castle all kinds of concerts take place during the summer months. The upper part is a quiet residential area and was one of the most exclusive in Palma with its impressive villas. Today it is a privileged neighbourhood for families wishing to live in a quiet area, but still be within easy reach of all amenities.

Son Armadams is only a few minutes away from the trendy district of Santa Catalina, one of the town's most popular places for gastronomy and nightlife. The Paseo Maritimo and the harbour, where lovely walks and the nightlife can be enjoyed, is also only a stone's throw away.

Son Armadams is only a few minutes by foot from the historic town centre and its main streets, where the best shopping possibilities on the island can be found. It is a residential oasis directly in the town and an excellent choice when seeking peace and quiet, although still wishing to be within easy reach of all facilities.

Son Armadams

search for property MAL-122298



Cozy living area



Bright and airy dining space



Open-plan living area



Kitchen with access to the terrace



Terrace



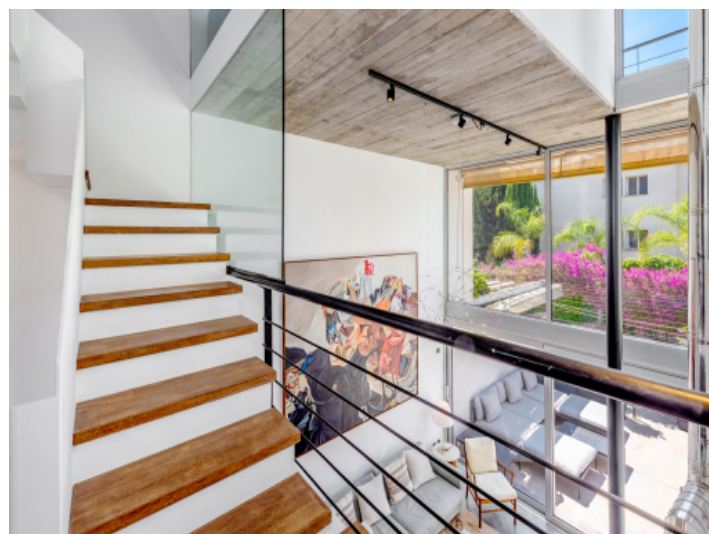
Communal pool

Son Armadams

search for property MAL-122298



Outdoor area



Gallery



1 of 4 bedrooms



Master bathroom



Comfortable seating area



Staircase

Son Armadams

search for property MAL-122298



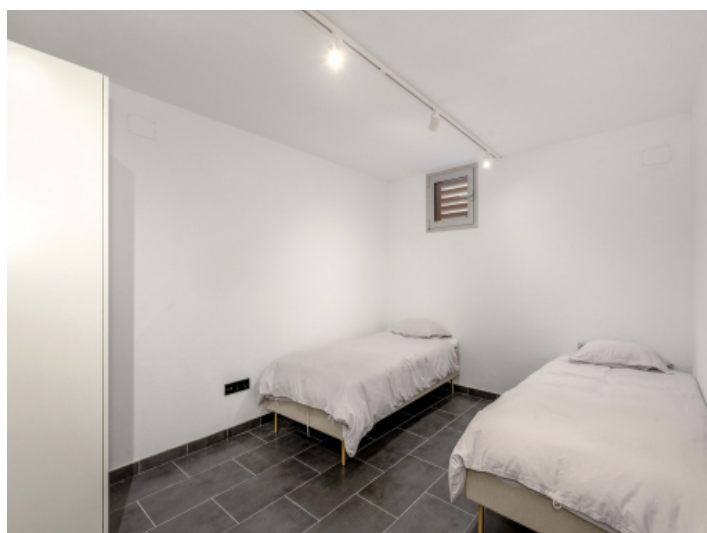
Gallery



Kitchen



Garage



1 of 4 bedrooms



Dining area



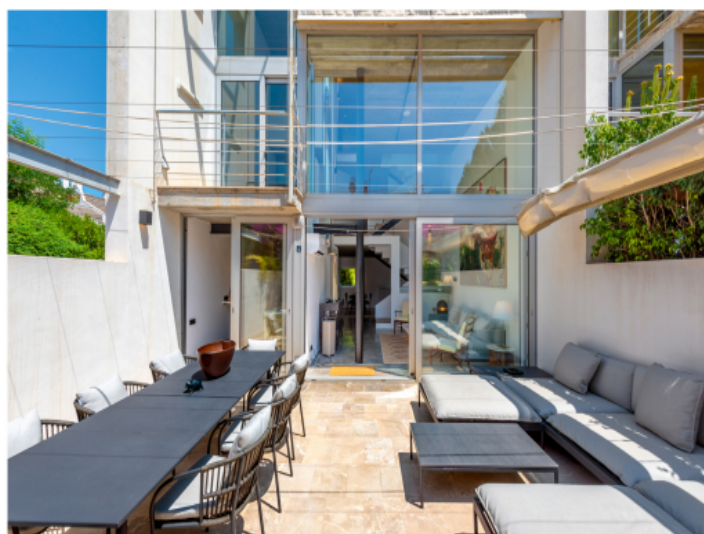
1 of 2 bathrooms

Son Armadams

search for property MAL-122298



modern Living area



Exterior view



Inviting terrace



1 of 4 bedrooms



Guest toilet



1 of 4 bedrooms