

Campos

search for property MAL-121832



A dreamlike newly built finca between Campos and the natural beach Es Trenc

constructed area:	335 m ²	energy certificate:	b
plot area:	30.000 m ²		
bedrooms:	4		
bathrooms:	4		
sea view:	-	price:	€ 3,245,000.-



Campos

search for property MAL-121832



Details:

This unique new-build finca is located between Campos and Sa Rapita in the Son Sorda area. Upon entering the finca, you immediately see and feel the high-quality materials and the attention to detail.

The entrance area with the sliding gate made of solid wood invites you to see more. The house impresses with its high ceilings and care has been taken to ensure that plenty of light enters the property. There are 2 bedrooms on the left-hand side of the first floor, each with an en-suite bathroom. Each of these rooms has access to its own terrace. On the right-hand side, below the staircase to the upper floor, there is a small storage room and a guest WC has been installed next to it.

The spacious entrance area leads into the open-plan living, cooking and dining area. Here, a fireplace invites you to spend cosy hours and all the furniture has been selected in simple natural colors. In combination with the micro-cement floors and the polished walls, this creates an enchanting symbiosis.

Through the floor-to-ceiling windows you can enjoy a wonderful view of the lovingly landscaped garden and pool. The terraces are cozy and access is at ground level. A staircase leads to the upper floor. There are 2 further bedrooms here, including the master bedroom with an en suite bathroom. Both bedrooms have access to a large balcony with great views of the countryside.

Further features include:

- Saltwater pool with the option to heat or cool it
- Underfloor heating via air/heat pump
- technical room
- Double garage
- Solar and city electricity

Arrange a viewing appointment with us and feel the positive energy of this property.

Campos

search for property MAL-121832



Location & surrounding area:

The rural town of Campos in the South-east of the island is conveniently situated halfway between Lluçmajor and Santanyí. Surrounded by an extensive agricultural area, the town offers many shops for daily needs, restaurants and sporting facilities. There are only a few defence towers left of the old medieval town. Today Campos is a lively community, which especially on market days attracts many visitors.

The famous, long sandy beach of Es Trenc with its dunes and turquoise blue sea belongs to the municipality of Campos and offers beach fun with Caribbean flair.

The airport can be reached in 25 minutes, the island capital Palma is only 35 km away.

Campos

search for property MAL-121832



PORTA MONDIAL®

Your home. Our passion.



Front



Terrace



Garden



Terrace



Wohn-und Essbereich



Living area

Campos

search for property MAL-121832



PORTA MONDIAL®

Your home. Our passion.



Kitchen and dining area



Kitchen



Bedroom



Bedroom



Bathroom



Floor

Campos

search for property MAL-121832



PORTA MONDIAL®

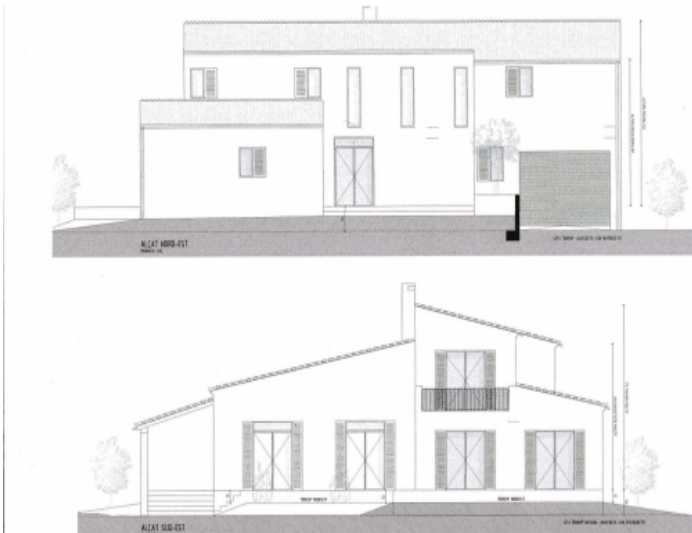
Your home. Our passion.



Floor



Front



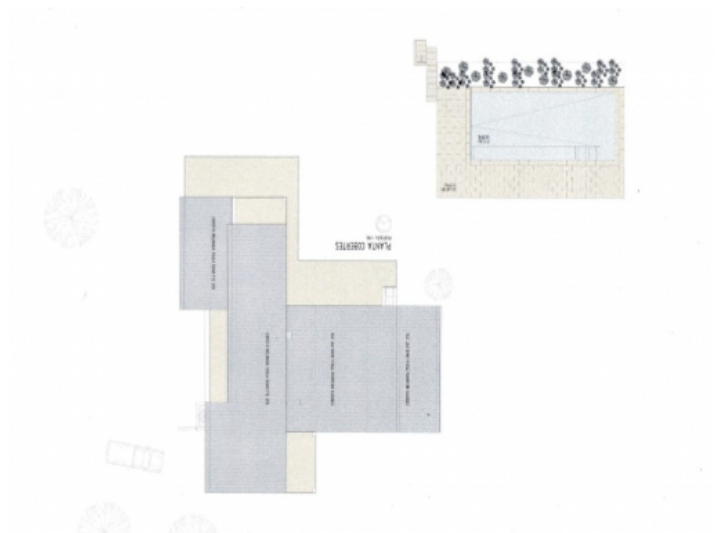
Plan front



Floor plan



Floor plan



Floor plan

Campos

search for property MAL-121832



PORTA MONDIAL®

Your home. Our passion.

Escala de la calificación energética	Consumo de energía kWh/m ² año	Emisiones kg CO ₂ /m ² año
A más eficiente		
B	26.67	7.32
C		
D		
E		
F		
G menos eficiente		

Energy certificate