

Binissalem

search for property MAL-121501



Charming finca in top location near Binissalem

constructed area:	220 m ²	energy certificate:	in process
plot area:	7.500 m ²		
bedrooms:	3		
bathrooms:	1		
sea view:	-	price:	€ 470,000.-



Binissalem

search for property MAL-121501



Details:

This enchanting finca captivates with its perfect combination of tranquility, nature, and excellent connectivity near the popular wine town of Binissalem. With a total construction area of approximately 220 sqm, including around 150 sqm of living space, this property offers ample room for your dreams.

The fully enclosed property spans a generous 7500 sqm and features a diverse array of flora, including numerous fruit trees, olive trees, cypresses, cacti, and various other Mediterranean plants. Enjoy sunny days and warm evenings on the various terraces, both open and covered. A dedicated area for a vegetable garden allows you to grow your own fresh produce. The traditional pizza oven invites you to enjoy convivial evenings with friends and family.

The single-story main house is a true gem and offers numerous design possibilities. Currently, it includes a kitchen, a cozy living-dining room with a fireplace, three spacious bedrooms, a bathroom, and a utility room. Additionally, there is a garage and various parking spaces on the property. A small, separate structure of approximately 7 sqm is ideal for use as a shed for your gardening tools.

A highlight of this finca is the rooftop terrace, which offers a magnificent view extending to the Tramuntana Mountains. All buildings are registered in the land registry.

Experience the perfect balance between rural tranquility and urban proximity – this finca is the ideal place for nature lovers and those seeking peace, yet not willing to sacrifice good connectivity. Let yourself be enchanted by the unique atmosphere and shape your new home according to your wishes. Do not hesitate to contact us for more information or a viewing. Your new paradise in Binissalem awaits you!

Binissalem

search for property MAL-121501



Location & surrounding area:

Binissalem received its name in the Moorish time, before King Jaume I conquered Majorca in 1229. It is situated picturesquely in front of the Tramuntana mountains and has approx. 5000 inhabitants. As in many other Majorcan villages you can see the church already from far. It is famous for its large wine-growing areas and a lovely red wine is exported to whole Europe. In autumn popular grape harvest festivals get celebrated.

Binissalem

search for property MAL-121501



PORTA MONDIAL®

Your home. Our passion.



Charming finca in top location near Binissalem



View to this little gem



Covered Terrace



Part of the facade



Conservatory



Garden

Binissalem

search for property MAL-121501



PORTA MONDIAL®

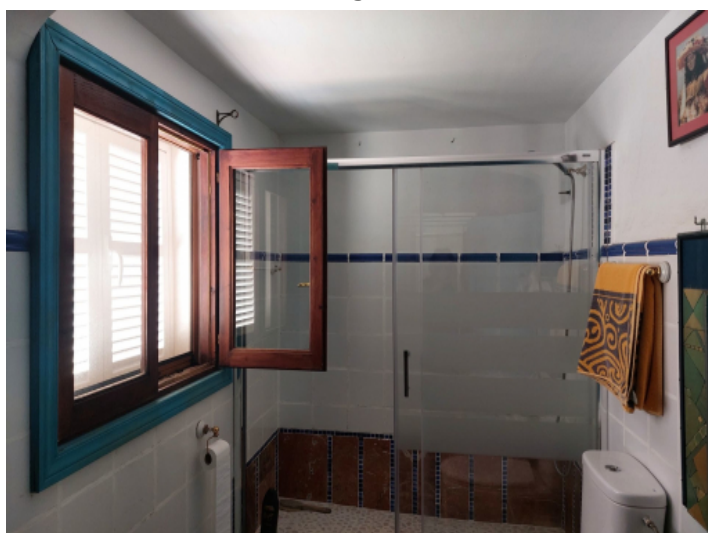
Your home. Our passion.



Living area



Fireplace



Bathroom



Front facade and pizza oven oven



Pizza oven



Plot and views

Binissalem

search for property MAL-121501



PORTA MONDIAL®

Your home. Our passion.



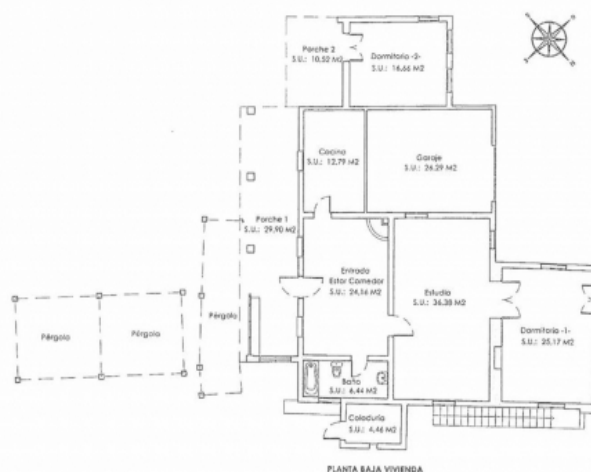
Covered terrace



Garden



A property with lots of possibilities



Floorplan