

Arta

search for property MAL-120902



PORTA MONDIAL®

Your home. Our passion.

Dream finca with mature trees and pool near Arta

constructed area:	600 m ²	energy certificate:	e
plot area:	22.460 m ²		
bedrooms:	6		
bathrooms:	4		
sea view:	-	price:	€ 1,499,000.-



Arta

search for property MAL-120902



Details:

This wonderful finca is located only a few minutes from Artá and offers a lovely idyllic setting surrounded by Mallorca's beautiful landscape. Built in 2002 is characterised by a successful combination of Mallorcan and German architecture, and is currently divided into 2 identical residential units.

The living space of each of these units is distributed, on the ground level, over a spacious living/dining area, a practical utility room, 2 comfortable bedrooms, a bathroom, and a guest WC. One of the units also has a spacious, rustic-style kitchen inviting to enjoy communal cooking.

Housed on the upper floor there are 2 further bedrooms with private en-suite bathrooms and access to a large terrace. From here breathtaking panoramic views of the hilly landscape and the imposing castle- mountain of Artá can be enjoyed.

The expansive exterior area of the finca offers both covered and open terraces, inviting to relax and enjoy, and the well-maintained garden with diverse fruit trees and a 50 sqm saltwater pool creates a real Mediterranean atmosphere of well-being.

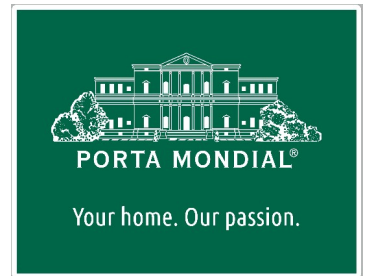
On the plot there is also a small annex building which could be used as a storage and/or house-technology room, and 4 garage parking spaces.

The property is surrounded by a charming natural-stone wall, ensuring ample privacy. Further features include a private water source, mains power, oil-fired central heating, a heat pump for hot water, a solar energy system, automatic garden irrigation, a water-decalcification unit, an automatic gate, and SAT-TV and internet.

This exceptional property would be an ideal choice for a large family or for sharing with friends and enjoying the Mediterranean way of life to the full.

Arta

search for property MAL-120902



Location & surrounding area:

Artà is situated in the northeast of the island, a good part of the municipality is part of the natural park “Parque Natural de Llevant”. It belongs to the few municipalities of Mallorca that still have natural wide sandy beaches. About 7000 inhabitants live in the 140 km² large municipality area. The landmark, the church of Sant Salvador with its thick walls, looks proudly down to the village and can be seen for miles around.

Arta
search for property MAL-120902



Views to the spacious garden and the pool from the balcony



Views from the pool to the terrace



Covered terrace with pool views



Well-tended garden



Open living and dining area with terrace access



One of two open living and dining areas

Arta

search for property MAL-120902



PORTA MONDIAL®

Your home. Our passion.



Kitchen with balcony access



Kitchen with terrace access



Bright bedroom



Cosy bedroom



Bathroom with bathtub



Bathroom with shower

Arta

search for property MAL-120902



PORTA MONDIAL®

Your home. Our passion.



Entrance from the finca



Drive leads to the finca



Four garages for the cars



Carport built with natural stones



Large terrace



Pool views from the balcony

Arta

search for property MAL-120902



PORTA MONDIAL®

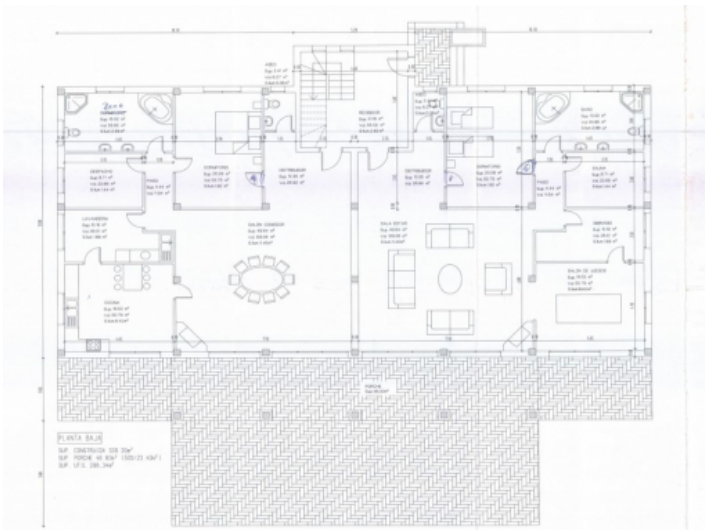
Your home. Our passion.



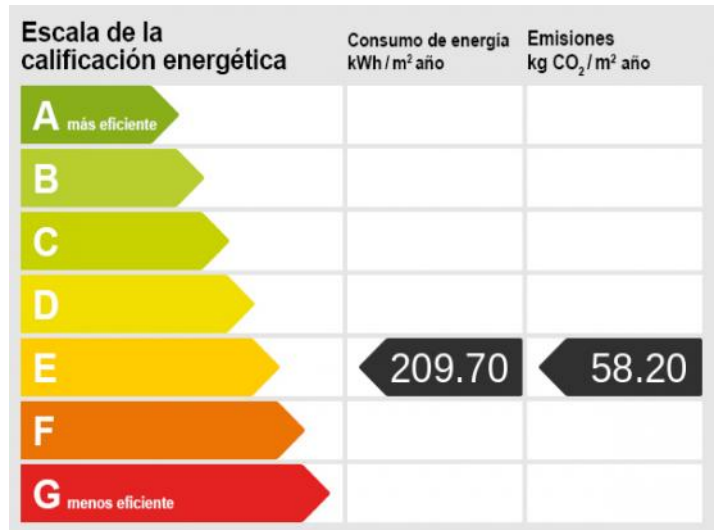
Sunny balcony



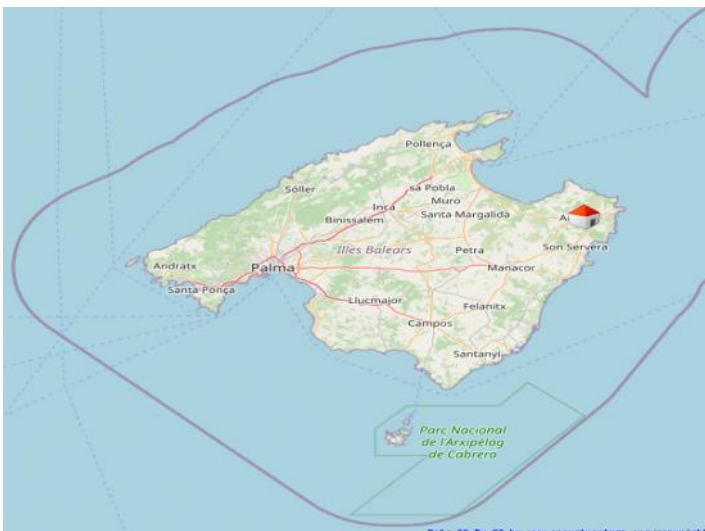
Bird's-eye-views to the finca



Floorplan



Energy certificate



Artá