

Lloseta

search for property MAL-119563



Enchanting boutique hotel with large garden, pool and parking in Lloseta

constructed area:	760 m ²	energy certificate:	b
plot area:	5.100 m ²		
bedrooms:	9		
bathrooms:	9		
sea view:	-	price:	€ 2,900,000.-



Lloseta

search for property MAL-119563



Details:

This oasis of well-being was created from an historical building dating from the 16th century! Upon arrival at the almost 4.400 sqm plot of land on the outskirts of Lloseta, from where the popular hiking routes into the Tramuntana start, life's normal daily routine will end.

The main house of this very tastefully restored property currently offers 8 spacious, individually-designed bedrooms, each with en-suite bathroom, one of which is also suitable for the disabled. The large, connected living/dining/kitchen areas give access to a wonderful patio with magnificent olive trees and beautiful antique stone floors, where diverse peaceful places to relax and enjoy the special atmosphere can be found.

An adjacent building provides rooms for wide-ranging uses (currently used as yoga and treatment rooms), and a housekeeping room. On the upper level is also a further lounge-studio.

Passing by rosemary and lavender plants and diverse fruit trees in the garden the 12 x 4 metre saltwater pool with its surrounding sun terraces can be reached, the perfect place for a refreshing swim or simply to relax and enjoy a good book.

All bedrooms and the kitchen are air conditioned, with a pellet-fueled central heating system assuring cosy temperatures during the colder months. A private parking area offers space for up to approx.10 cars, plus a garage, and there are 2 private wells and a further water connection.

All-in-all a marvellous place for lovers of rustic Mallorcan charm and authentic local nature. This exceptional property is, of course, also eminently suitable for use not only as a country hotel or for touristic rental, but also for private occupation.

Lloseta

search for property MAL-119563



Location & surrounding area:

The town of Lloseta with 5988 inhabitants (2019) is on the foothills of the Tramuntana mountain range. It is the head of its same-named municipality. The northern and mountainous part of the municipality counteracts the flat southern part.

Lloseta was established in 1812 and branched off from Binissalem.

Due to the good infrastructure it is only 5 min away from the 3rd largest city on the island, Inca, and 20 min from the Palma.

Lloseta

search for property MAL-119563



PORTA MONDIAL®

Your home. Our passion.



Finca and enchanting patio-like terrace



Beautifully located salt-water pool



Large 12 x 4 metres pool and sun terrace



View of the building and entrance



Entrance to the main house with bar area



Large, open living area

Lloseta

search for property MAL-119563



PORTA MONDIAL®

Your home. Our passion.



Comfortable living area with terrace access



Open kitchen area with terrace access



Dining table with fireplace and charcter



Separate spacious dining room



Individually-designed bedroom



Fantastic en suite bathroom

Lloseta

search for property MAL-119563



PORTA MONDIAL®

Your home. Our passion.



One of 8 bedrooms



Bedroom with unique character



Open modern bathroom



One of 8 bedrooms



Bedroom with lots of charme



View over the wonderful terrace

Lloseta

search for property MAL-119563



PORTA MONDIAL®

Your home. Our passion.



Enchanting front terrace



Perfect place to enjoy a drink



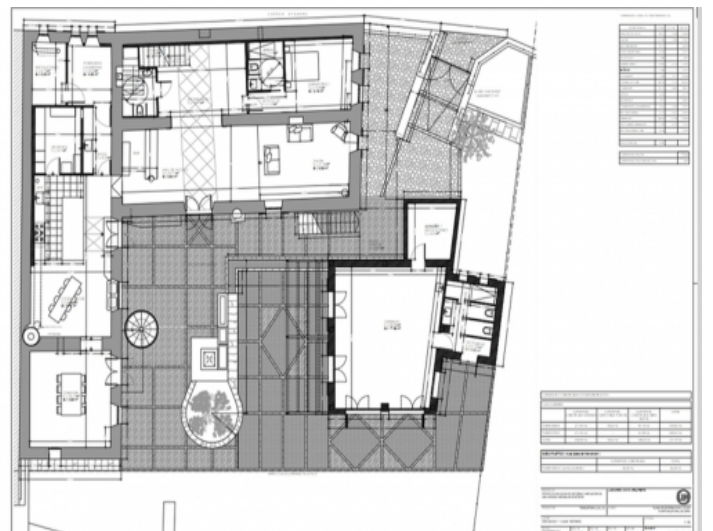
Further garden terrace



Path through the garden with fruit trees



Idyllic terrace



Plan

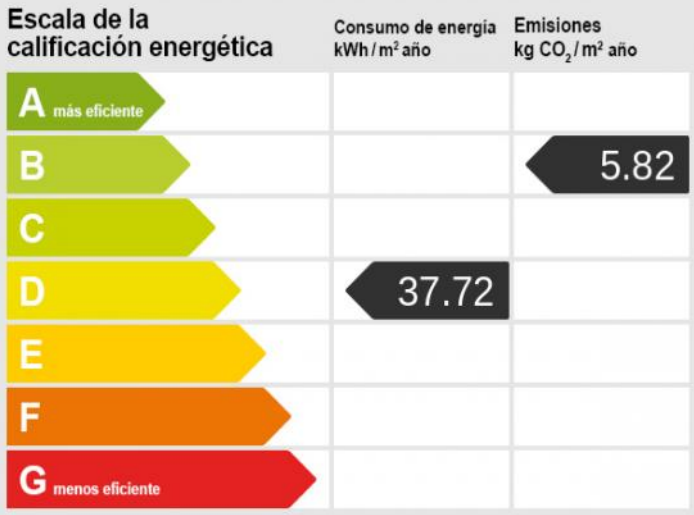
Lloseta

search for property MAL-119563

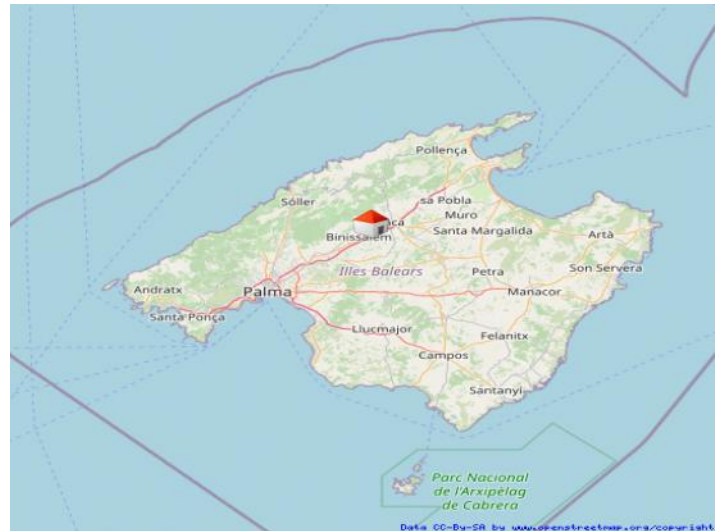


PORTA MONDIAL®

Your home. Our passion.



Energy certificate



Lloseta



Terrace



Exterior view



Terrace



Entrance

Lloseta

search for property MAL-119563



PORTA MONDIAL®

Your home. Our passion.



Kitchen



Bathroom



Room



Room



Room



Room

Lloseta

search for property MAL-119563



PORTA MONDIAL®

Your home. Our passion.



Room



Pool



Terrace



Terrace