

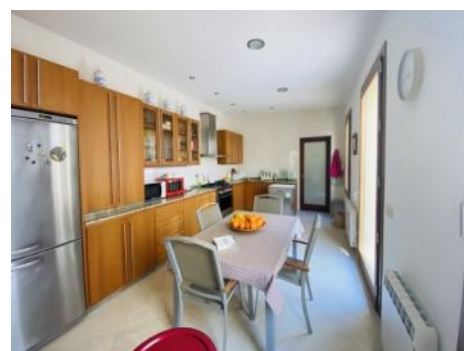
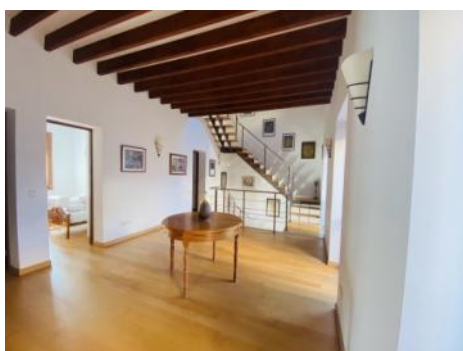
Sa Pobla

search for property MAL-118028



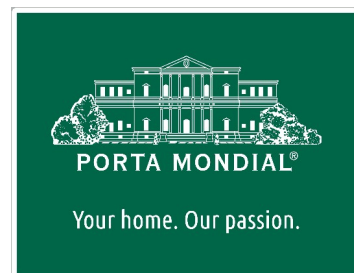
Wonderful town house with holiday rental license in Sa Pobla

constructed area:	533 m ²	energy certificate:	in process
plot area:	331 m ²		
bedrooms:	6		
bathrooms:	4		
sea view:	-	price:	€ 1,150,000.-



Sa Pobla

search for property MAL-118028



Details:

This renovated 6-bedroom home in Sa Pobla offers a unique blend of traditional Mallorcan charm and modern convenience.

The house boasts a prime location in the heart of town, just steps away from the Plaza Major and tucked away on a quiet, pedestrian street behind the church. Original stone walls and a striking facade lend character to the property, while modern updates ensure comfort and convenience.

Spread over 3 floors, the home features a ground floor with a double bedroom and en suite, a study area, large kitchen, and open plan living/dining room leading to a terrace and private pool.

Upstairs, the first floor offers three bedrooms, one en suite, and a contemporary living room with Juliet balconies and a covered upper terrace. The second floor contains two additional bedrooms, a bathroom, and yet another living area.

This home offers ample outdoor space with sunny terraces and the coveted private pool. A hidden gem with a tourist rental license, this property is a must-see for those seeking a unique and centrally located Mallorcan experience.

Sa Pobla

search for property MAL-118028



Location & surrounding area:

The town of Sa Pobla is located in the northeast of the beautiful island of Mallorca, near the Bay of Alcudia, between the towns of Pollensa and Alcúdia.

Spared from mass tourism, Sa Pobla offers a pleasant and quiet ambience for vacations or relaxation. The marketplace Plaza Mayor is busy all year round and attracts with various stores, restaurants and cozy cafes. Sports enthusiasts will get their money's worth on countless cycling and hiking tours.

The surrounding villages of Sa Pobla are Muro, Bugar, Llubí or Pollensa. The capital Palma and the airport can be reached in 40 km.

Sa Pobla

search for property MAL-118028



PORTA MONDIAL®

Your home. Our passion.



Open living and dining area



Upper floor



Kitchen with dining area



One of 6 bedrooms



One of 6 bedrooms



One of 6 bedrooms

Sa Pobla

search for property MAL-118028



PORTA MONDIAL®

Your home. Our passion.



One of 4 bathrooms



Lower floor



Exterior view