

Palmanova

search for property MAL-116714



PORTA MONDIAL®

Your home. Our passion.

Large sea view villa nearby the beach and international schools in Palmanova

constructed area:	400 m ²	energy certificate:	in process
plot area:	1.600 m ²		
bedrooms:	7		
bathrooms:	3		
sea view:	✓	price:	€ 1,800,000.-



Palmanova

search for property MAL-116714



Details:

This family villa is located in Palmanova nearby the beach, supermarkets, restaurants, shops and international schools.

It was built in the beginning of the 1990's and is ideal for a large family. The house comprises 7 bedrooms, a large, cosy living room with fireplace and direct access to the sunny terrace with pool offering superb sea views. On the ground floor are also a completely equipped kitchen and a dining area, 2 bedrooms and a bathroom, as well as an additional room currently used as a TV and play room for children. This room could also be integrated into the kitchen.

A beautiful staircase leads to the first floor comprising a large anteroom and further bedrooms such as the main bedroom with bathroom en suite and a single bedroom, which could be converted into a walk-in wardrobe.

One of the 3 additional bedrooms is used as an office granting access to a terrace. There is also another bathroom.

The property features a separate sauna and a generous open summer kitchen with lots of space for guest, being ideal for having parties with sea views as background. The Mediterranean garden comprises typical fruit trees such as orange, lemon, fig and almond trees.

The villa offers a separate guest studio and 3 covered parking spaces, hot/cold air conditioning, central heating throughout, fitted wardrobes and a touristic rental licence for 12 persons.

Palmanova

search for property MAL-116714



Location & surrounding area:

Located between Son Caliu and Torrenova, it was the first urbanization that was built in Calvià and one of the pioneer of Majorca, contemplated in 1934. There are three sand beaches and a small maritime club. It has a good hotel infrastructure with a series of complementary services. Right at the city limit, in the direction of Andratx, you can locate the cross del Pi dels Montcades , which commemorates the place where the Montcada brothers, collaborators of the king Jaume I during the islands conquest, were given funerary distinctions.

Palmanova

search for property MAL-116714



PORTA MONDIAL®

Your home. Our passion.



Well-tended patio



Spacious terrace



Modern living area



Open kitchen and dining area



Rustic kitchen



Dining area of the kitchen

Palmanova

search for property MAL-116714



PORTA MONDIAL®

Your home. Our passion.



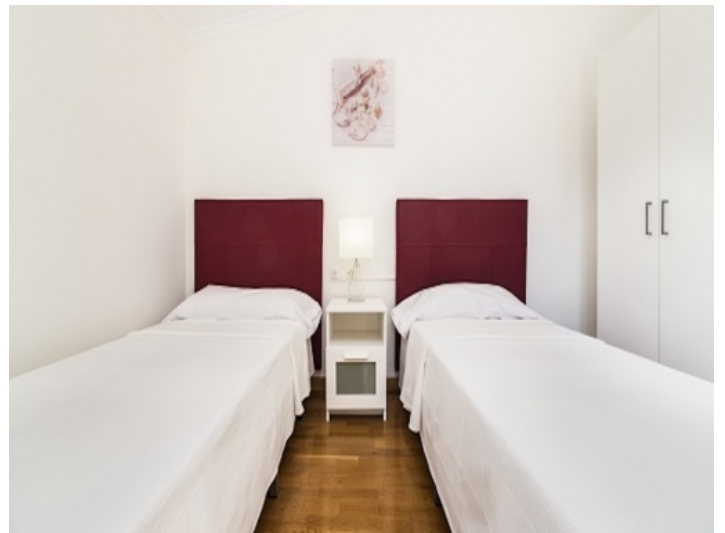
Bedroom with panoramic windows



Cosy bedroom



Rustic bedroom



Another double bedroom



Modern bathroom



Modern bathroom

Palmanova

search for property MAL-116714



PORTA MONDIAL®

Your home. Our passion.



Mallorquin barbecue area



Exterior view