

Son Espanyolet

search for property MAL-111250



New town house with roof terrace and pool in Son Espanyolet

constructed area: 270 m²

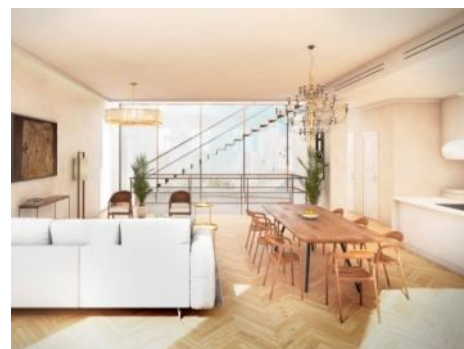
energy certificate: in process

bedrooms: 3

bathrooms: 3

sea view: -

price: € 1,425,000.-



Son Espanyolet

search for property MAL-111250



Details:

This newly-built townhouse, being constructed with only the best-quality materials, is situated in the quiet and popular area of Son Espanyolet. Two homes are under construction each with a living space of 197 sqm, a roof terrace and a garage with storage facilities.

Located on the ground floor are 3 bedrooms, all with their own bathroom. On the first floor is the large, open living/dining area with open plan kitchen, a fireplace, a guest WC and a laundry room. Large window frontages provide ample light into the living space.

A further staircase in this modern residence leads up to the 50 sqm roof terrace with an outdoor kitchen, a small pool, a pergola and ample space for outdoor furniture and sun loungers.

On the basement level is the garage with storage space.

The house is within easy walking distance of Santa Catalina's numerous shops, restaurants and bars.

The townhouse comes with underfloor heating with gas, air-condition, parking in the garage and a store room.

The project is scheduled to start in autumn 2018.

Son Espanyolet

search for property MAL-111250



Location & surrounding area:

Son Espanyolet is a growing and charming area located right next to the trendy Santa Catalina district with the most diverse culinary offer of restaurants, bars and cafés that Palma has to offer. Despite its central location, Son Espanyolet is characterised by the quiet atmosphere you will find there. It is an ideal place to live away from the hustle and bustle of the big city, but still be surrounded by all kinds of amenities such as supermarkets, pharmacies, cafés, bars and restaurants. The Juaneda Private Hospital is also located in Son Espanyolet.

The famous Paseo Marítimo, the fantastic promenade that runs parallel to the coast of Palma and is ideal for walking, sports and enjoying restaurants and clubs, is also only a 7 minute walk away. With several schools nearby, this area is a popular choice for families. The area is a mixture of villas with gardens and low buildings. From many of the properties you can enjoy beautiful views of Bellver Castle, which is within walking distance and offers stunning views over the bay of Palma.

Early risers can enjoy the sunrise over Palma here.

Son Espanyolet
search for property MAL-111250



Your home. Our passion.



Roof terrace with fantastic pool and outside kitchen



Wonderful roof terrace with various lounge areas



Light-flooded living and dining area and open kitchen



The high-quality property offers a living space of 197 sqm



One of 3 comfortable bedrooms



Luxurious bathroom with bathtub and shower

Son Espanyolet

search for property MAL-111250



GROUND FLOOR



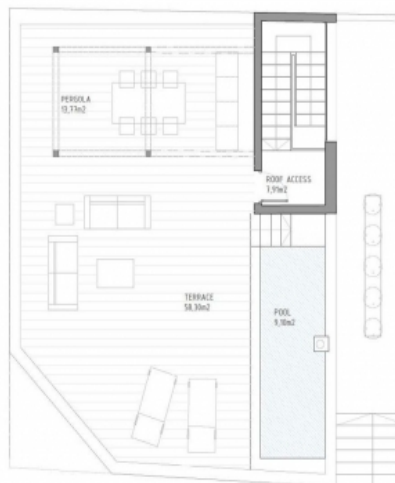
Construction plan ground level

FIRST FLOOR



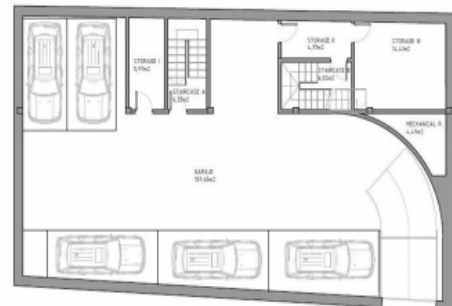
Construction plan of the upper level

ROOF FLOOR



Construction plan of the roof terrace

PARKING FLOOR(-1)



Construction plan of the car park