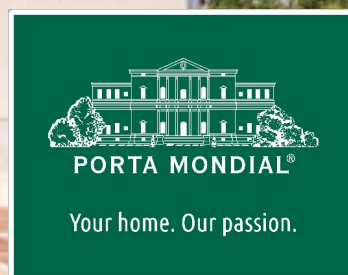


## Son Vida

search for property MAL-110524



## Imposing manor house with pool in Son Rapinya near to Son Vida with separate guest house and a park

constructed area:	578 m <sup>2</sup>	energy certificate:	e
plot area:	6.300 m <sup>2</sup>		
bedrooms:	7		
bathrooms:	6		
sea view:	✓	price:	€ 3,490,000.-



## Son Vida

search for property MAL-110524



### Details:

This over 100 year-old manor house impresses with its interesting details, and its space distribution fulfills the standards of a representative Mediterranean property. It also has a guest apartment and a further building separated from the private living area.

It stands on approx. 6.300 sqm of land with an established tree population. The main house has 6 bedrooms and 3 bathrooms and a guest WC, and on the lowest level there are 2 further bedrooms, 2 bathrooms, a salon and a wine cellar.

An additional guest house/atelier has 2 rooms and a shower-bathroom.

A porch gives access to the ground floor and a spacious entrance hall with an open fireplace, a library, a room with en-suite shower-bathroom, a dining area, a private salon, the kitchen and a guest WC.

The upper floor houses the master-suite with dressing room and bathroom, a further small bedroom, and a formal dining area. All rooms have access to a surrounding balcony.

On the loft floor is a bright room with access to the roof terrace with views over the sea and to the Bellver castle.

The large terrace of the 14 x 6 metre saltwater pool offers ample space for sun loungers and garden seating, and the 2 existing carports could easily be converted into a closed garage.

**Son Vida**

search for property MAL-110524



## Location & surrounding area:

The well-known villa urbanization of Son Vida is situated only a few minutes away from the center of Palma. Nestled in idyllic, rolling landscape at the foot of the Tramuntana mountain range it provides fantastic views over the bay of Palma and the open sea.

Its numerous designer-villas will inspire lovers of architecture, and all properties stand on ample-sized plots of land so that the privacy of each is assured.

Added to that the 24-hour security service at the entrance to Son Vida preserves the security of the cosmopolitan residents. Thanks to the excellent traffic connections the airport is less than half an hour's drive away, although absolute tranquility is enjoyed on site. Additionally, Son Vida offers numerous sport and leisure activities, particularly for golfers. A total of four golf courses (Golf Son Vida, Golf Son Muntaner, Golf Son Quint and Golf Son Quint Pitch & Putt) stretch over the extensive terrain and incorporate themselves picturesquely into the surrounding nature.

The center of Palma with its exquisite bars, restaurants and shopping possibilities can also be speedily reached and offers cultural and culinary variety the whole year.

Families with school-age children will also feel comfortable in Son Vida. In 2017 the Green Valley Private School was opened and guarantees outstanding education for its pupils.

For exquisite accommodation there are two 5-star hotels on site. The Sheraton Mallorca Arabella Golf offers traditional country-house charm, and the Castillo Hotel Son Vida is a modernized castle originating from the 13th century and offers an extensive range of services and classic ambience. From the hotel terrace there are spectacular views of Palma and its surroundings.

Son Vida also has a very good selection of restaurants which, in part, belong to the hotels described above.

Why not just come by and be convinced by Son Vida's radiance?

Son Vida  
search for property MAL-110524



PORTA MONDIAL®

Your home. Our passion.



Huge terrace with 14 x 6 metre pool



Covered terrace with seating area



Comfortable living area with wooden ceiling beams



Dining area on the ground floor with views to the entrance



Generous entrance hall with lounge area



The entrance area has also a cosy fireplace

Son Vida  
search for property MAL-110524



PORTA MONDIAL®

Your home. Our passion.



The manor house impresses with interesting elements



Light-flooded kitchen with terrace access



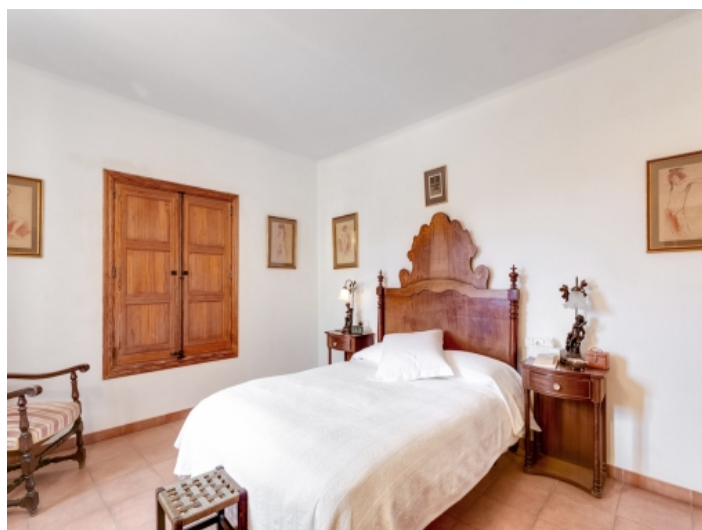
Further room with wooden cupboards and elements



Formal dining area on the main floor



Alternative view of the large dining area



Traditional double-bedroom

Son Vida

search for property MAL-110524



PORTA MONDIAL®

Your home. Our passion.



Bathroom with shower and wooden washbasin



Further bedroom on the main floor with bathroom en suite



Bathroom en suite with bathtub



One of 7 cosy bedrooms



The manor house is ideal for lovers of Mallorcan architecture



Bright bedroom on the loft floor with terrace access

Son Vida

search for property MAL-110524



PORTA MONDIAL®

Your home. Our passion.



One of 6 bathrooms



Modern shower bathroom



Beautiful double-bedroom in the guest house



All bedrooms offer a pleasant ambience



Inviting lounge area with bedroom access



Bathroom with walk-in shower and heating

PORTA MALLORQUINA • C./ COLOM 20 2º, 07001 PALMA, SPAIN

TEL.: +34 971 698 242 • INFO@PORTAMALLORQUINA.COM • WWW.PORTAMALLORQUINA.COM

Son Vida  
search for property MAL-110524



PORTA MONDIAL®

Your home. Our passion.



The wine cellar creates a rustic atmosphere



Lovely terrace with acces to a further house



Guest apartment with living area and access to the outside



Wonderful library



A fireplace invites to enjoy also the winter days



Large sun terrace



Son Vida  
search for property MAL-110524



PORTA MONDIAL®

Your home. Our passion.



The terrace offers fantastic views



Views over the sea and to the Bellver castle



The house is surrounded by a large park



Beautiful views to the countryside



The pool area is surrounded by the green garden



The pool area invites to enjoy the summer

Son Vida  
search for property MAL-110524



PORTA MONDIAL®

Your home. Our passion.



Sunny pool terrace



Rear view of the spectacular manor house



Alternative view of the terrace



Further large terrace



Terrace with dining area and table-tennis table



Covered terrace of the guest house

Son Vida  
search for property MAL-110524



Your home. Our passion.



Alternative view of the terrace



The house offers various terraces



Exterior view of the guest house



Large patio with palm trees



The manor house is a unique property



Entrance door to the plot

Son Vida

search for property MAL-110524



PORTA MONDIAL®

Your home. Our passion.



Son Vida

search for property MAL-110524



PORTA MONDIAL®

Your home. Our passion.

Street view



Son Vida

search for property MAL-110524



PORTA MONDIAL®

Your home. Our passion.



Antique entrance door

Son Vida

search for property MAL-110524



PORTA MONDIAL®

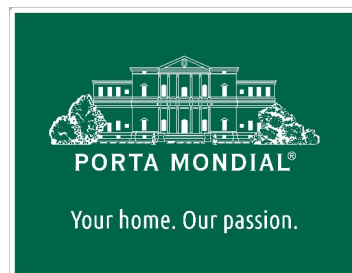
Your home. Our passion.

Dreamlike views from the house



Son Vida

search for property MAL-110524



Energy certificate