

Esporles

search for property MAL-104838

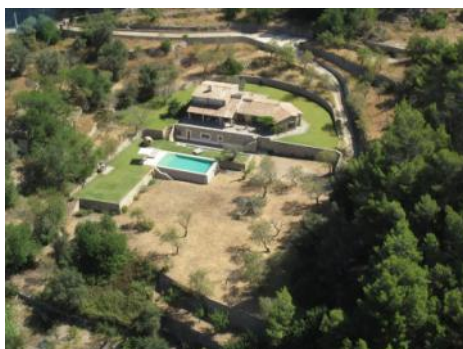


PORTA MONDIAL®

Your home. Our passion.

Authentic finca with panoramic views in Esporles nestled in the Tramuntana available for winter rental

constructed area:	327 m ²	energy certificate:	in process
plot area:	41.000 m ²		
bedrooms:	3		
bathrooms:	3		
sea view:	-	MIETPREIS:	€ 7,000.-:



Esporles

search for property MAL-104838



Details:

Authentic finca with panoramic views in Esporles nestled in the Tramuntana available for winter rental

This extraordinary natural stone finca near Esporles combines absolute privacy, modern design, and rustic charm. Set on a plot of around 41,000 m², it offers a peaceful retreat with views of the Serra de Tramuntana, a UNESCO World Heritage Site.

The property offers a living area of approximately 327 m². It accommodates up to 7 people and features 3 spacious bedrooms and 3 elegant bathrooms. One of the bathrooms is en suite with bathtub and shower, while the other two are equipped with showers, one of them even with a double shower.

The interiors impress with high ceilings, exposed wooden beams, authentic terracotta floors, and large panoramic windows that perfectly capture the Mallorcan light. A special highlight is the generous living room with fireplace and the gallery with TV lounge, offering an incomparable view of the surrounding mountains. The fully equipped kitchen connects to a domed dining room that stands out with its stone architecture.

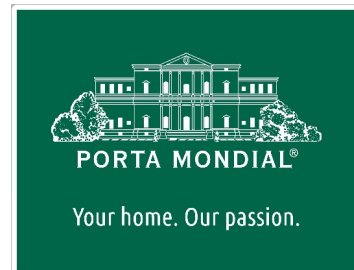
Outdoors, a 75 m² saltwater pool, gentle on the skin, invites you to relax. Several terraces and verandas provide the perfect setting to enjoy the Mediterranean lifestyle to the fullest. Children will love the charming treehouse, and there is also a small grill for cozy evenings.

The finca is equipped with underfloor heating, air conditioning in the bedrooms, WiFi, Smart TV, and ample parking space.

The location combines tranquility and convenience: only 2 km from the lively village of Esporles and about 15 minutes from Palma or the coast. Whether hiking, cycling, or simply relaxing, this finca is the perfect choice to spend the winter months in Mediterranean warmth and a truly unique environment.

Esporles

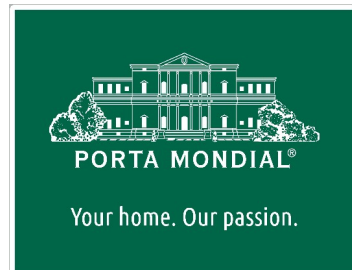
search for property MAL-104838



Location & surrounding area:

Esporles is situated in the mountains of the Tramuntana and has about 4.000 inhabitants, not far away from Palma, Valldemosa and Banyalbufar on the west coast. In earlier times the textile industry was an important element of the economy, today it is more agriculture and stock-farming and of course tourism. A walk through the village is always worthwhile.

Esportes
search for property MAL-104838



altwater infinity pool with panoramic views of the



Exclusive finca with large garden and saltwater pool



Sun terrace with saltwater pool and comfortable loungers in a



Stone finca with spacious grounds and stunning saltwater



Covered terrace with dining table and Mediterranean atmosphere

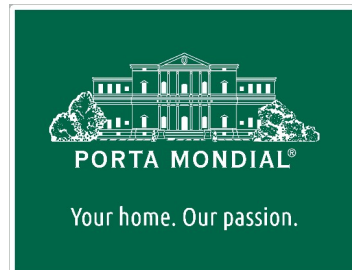


Cozy lounge with panoramic window and views of the Tramuntana mountains

PORTA MALLORQUINA • C./ COLOM 20 2º, 07001 PALMA, SPAIN

TEL.: +34 971 698 242 • INFO@PORTAMALLORQUINA.COM • WWW.PORTAMALLORQUINA.COM

Esporles
search for property MAL-104838



Bright country-style kitchen with wooden beams, terracotta



Elegant dining room with vaulted ceiling and mountain view



Cozy lounge with panoramic window and views of the



One of the three bedrooms

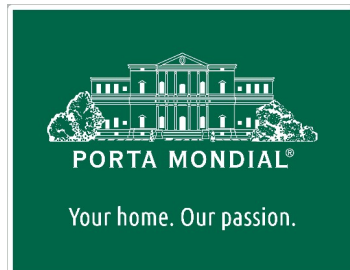


One of the three bedrooms



One of the three bedrooms

Esporles
search for property MAL-104838



Dressing area



Cozy living-room with panoramic window and views of the



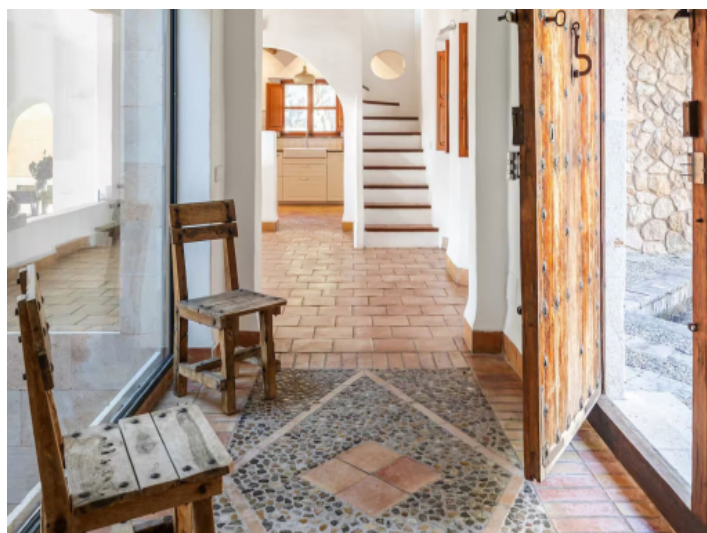
Modern bathroom with bathtub and Mallorcan charm



finca-esporles-03



One of the three bathrooms



Hall with stone floors

Esporles
search for property MAL-104838



Covered terrace with dining table and Mediterranean



Sun terrace with saltwater pool and comfortable loungers in a



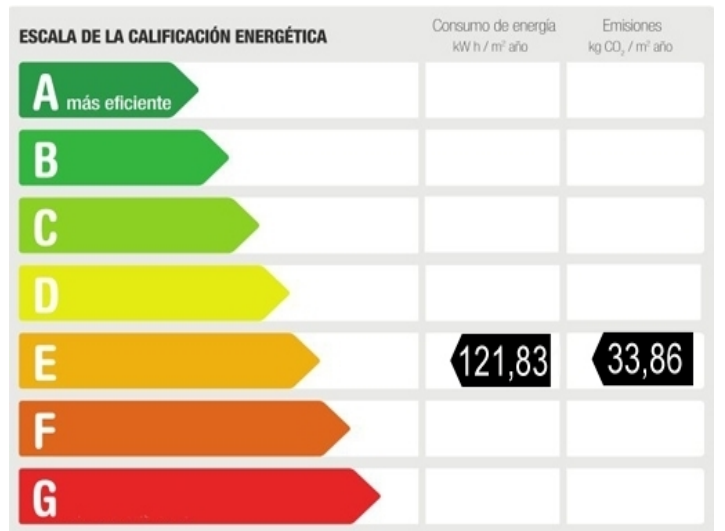
Authentic finca with Mallorcan courtyard and olive tree



Adventure for children in the finca's treehouse



Adventure for children in the finca's treehouse



Energy certificate