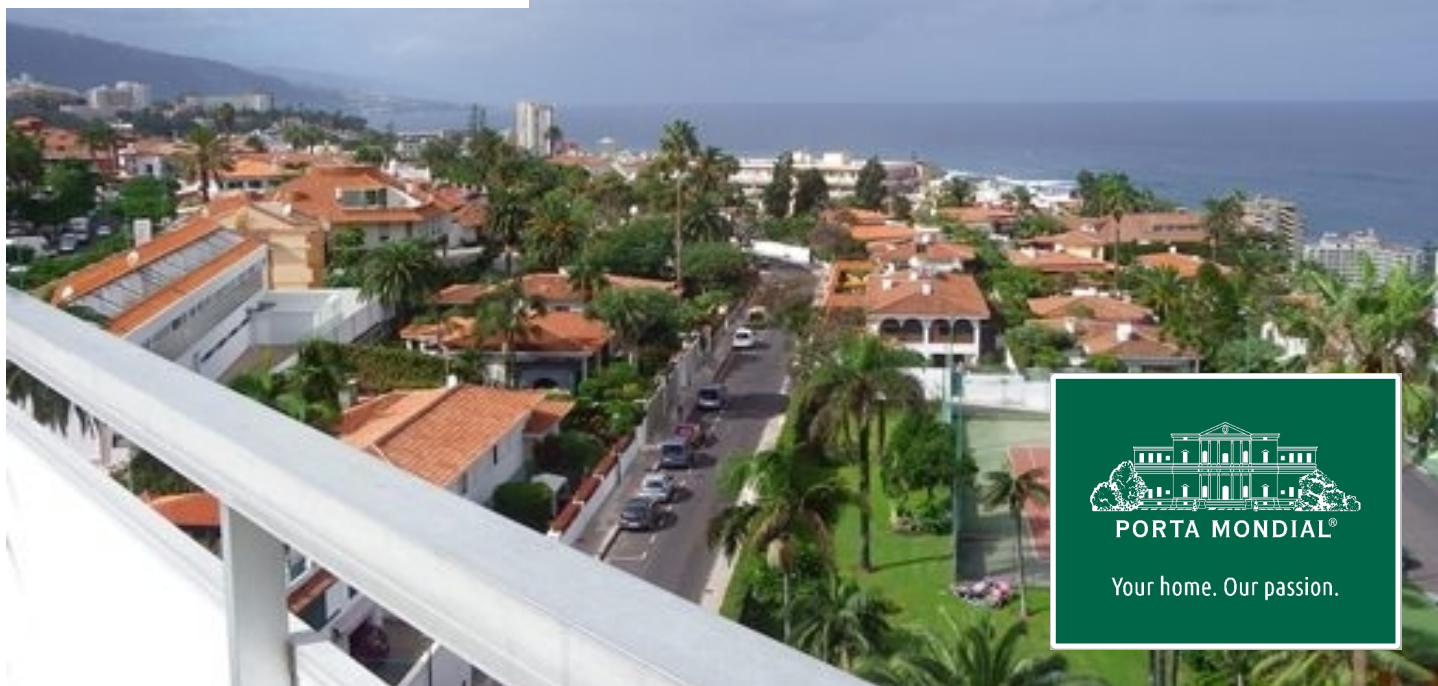


Puerto de la Cruz

search for property TEN-400050

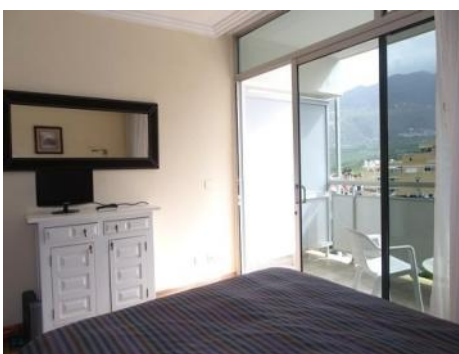


Top floor apartment with large terraces and Teide and sea views in La Paz

constructed area: 70 m²
bedrooms: 1
bathrooms: 1
balcony/terrace: -
sea view: ✓

swimming pool: ✓
energy certificate: in process

price: € 180,000.-



Puerto de la Cruz

search for property TEN-400050



Details:

This apartment, resembling a penthouse - with large terraces on two sides and only one neighbour apartment - convinces with its excellent location and its very good price-quality ratio: Situated in the popular quarter La Paz in Puerto de la Cruz, the property comes with wonderful views to the Atlantic, the coast, the impressive mountains and mount Teide. Only a few apartments in Puerto de la Cruz offer such a superior location above the most important city of the beautiful north coast of Tenerife, and at the same time, only a stone's throw away from the sea.

The large living room lies between the two large terraces of about 20 m² each and has therefore a particularly open ambience. At the south side - where the terrace is equipped with a large awning - you can find the sofas with large flat screen TV, the north side houses the dining area and the modern and fully equipped kitchen. The large American fridge with freezer provides ice cubes and crushed ice in order to enjoy cool drinks under Tenerife's sun.

Below the living area, connected with a spiral staircase, you can find the entrance area with a large fitted wardrobe, the bathroom with bathtub and washing machine as well as the spacious bedroom with additional covered terrace. Thus, the apartment has three terraces with a total area of about 50 m², where all of them are reachable via large sliding glass doors, creating a smooth connection between the exterior and interior area.

The apartment is equipped with satellite and terrestrial TV, with telephone and internet connection. All furnishings are included in the selling price. A parking lot - exclusively for the residents of the complex - provides sufficient parking facilities.

The hotel which is located below the apartment offers additional amenities: Outside a large nicely designed swimming pool, tennis courts and miniature golf, in the inside a heated indoor pool and good special conditions in the bar and the restaurants. Furthermore, the neighbouring hotel, which is under the same management, offers a fitness centre.

Puerto de la Cruz

search for property TEN-400050



Location & surrounding area:

Puerto de la Cruz is located at the foot of the Orotava Valley, rising up from the Atlantic Ocean to the volcano Teide, which already obtained celebrity by the times of Alexander von Humboldt. In the beginning the city was a port of La Orotava, the first Spanish settlement on the island. The city now offers, as a tourist centre of the north coast of Tenerife, all kinds of amenities and is therefore still a coveted location in Tenerife:

Puerto de la Cruz has two central beaches, Playa Jardin and Playa de Martiane. A particular gem is also the Playa Bolullo, a fine sandy beach located in a picturesque rocky bay and is often called the most beautiful of the island. For sport out of water is for example the golf course La Rosaleda ready.

Certainly one of the most significant man-made attractions of the Canary Islands is the Loropark in which the largest parrots and the largest penguin collection in the world, as well as apes, dolphins and killer whales, giant turtles and alligators, a giant saltwater aquarium and much more delight annual million visitors. But also the botanical garden is worth a visit any time.

Through its long history, the town offers many culturally significant buildings, such as historic port facilities, major church buildings as well as houses and villas from the areas of housing and commerce. So also at the Plaza del Charco, which invites "including the adjacent boulevards" to culinary delights, ramble and for evening entertainment.

Puerto de la Cruz

search for property TEN-400050



The light-flooded living area with open kitchen and two



The bedroom - with terrace as well



The lovely south facing terrace with stunning views of the



The large and well-maintained community pool



The open kitchen with dining area and access to the terrace



The modern, fully equipped kitchen

Puerto de la Cruz
search for property TEN-400050



The comfortable living area with the south terrace in the



Stunning views of the Atlantic



The modern bathroom with bath tub



The sunny terrace with sea view