

## Ciudad Jardin

search for property MAL-121229



### Penthouse with private roof terrace and fantastic sea views close to the Palma beaches

constructed area:	264 m <sup>2</sup>	swimming pool:	-
bedrooms:	3	energy certificate:	f
bathrooms:	2		
balcony/terrace:	✓		
sea view:	✓	<b>price:</b>	<b>€ 1,280,000.-</b>



## Ciudad Jardin

search for property MAL-121229



### Details:

This unique penthouse-apartment is situated within easy reach of the airport and the centre of Palma, on the beach promenade with its diverse restaurants and cafes.

Its incomparable views over the turquoise-blue Mediterranean, Palma's hilly landscape, and the rooftops of this popular suburb from the 120,40 sqm private roof terrace will delight all lovers of the southern part of the island. Added to that are the wonderful sunrises and sunsets which can be enjoyed to the full from this lovely property.

The apartment captivates with its living space of 143,16 sqm which includes 3 bedrooms, 2 bathrooms, one of which is en suite, a separate guest WC, a fully-equipped fitted kitchen with adjoining utility room, the living/dining area, and a glazed veranda.

A further workroom, an underground parking space with storeroom, and a lift all simplify everyday life and assist in making this exceptional penthouse ideal for occupation all year round.

Further features include integrated hot/cold air conditioning, a built-in wine cooler, an outside shower, and a dressing area in the main bedroom.

## Ciudad Jardin

search for property MAL-121229



### Location & surrounding area:

Ciudad Jardín is situated in an excellent location with convenient connections to Palma possible by bicycle, public transport, or in 5 minutes by car.

The district is also very popular with both local people and visitors due to its approx. 1 km long, gently-sloping beach with its adjoining play area, ideal for families with children. In 2008 the beach was granted an award for its cleanliness and its easy access for the disabled. Close by are a number of small, quiet and romantic bays.

The 'Paseo Marítimo' with its cycle path offers many sport possibilities together with a large choice of cafes and restaurants. In the immediate area there is also a commercial zone with supermarkets, banks and boutiques.



# Ciudad Jardin

search for property MAL-121229



PORTA MONDIAL®

Your home. Our passion.



apartment, Ciudad Jardin



Sea views



Sea views



Roof terrace



Roof terrace



Terrace access



# Ciudad Jardin

search for property MAL-121229



PORTA MONDIAL®

Your home. Our passion.



Terrace access



Wintergarden



Wintergarden



Living area



Living area



Dining area



# Ciudad Jardin

search for property MAL-121229

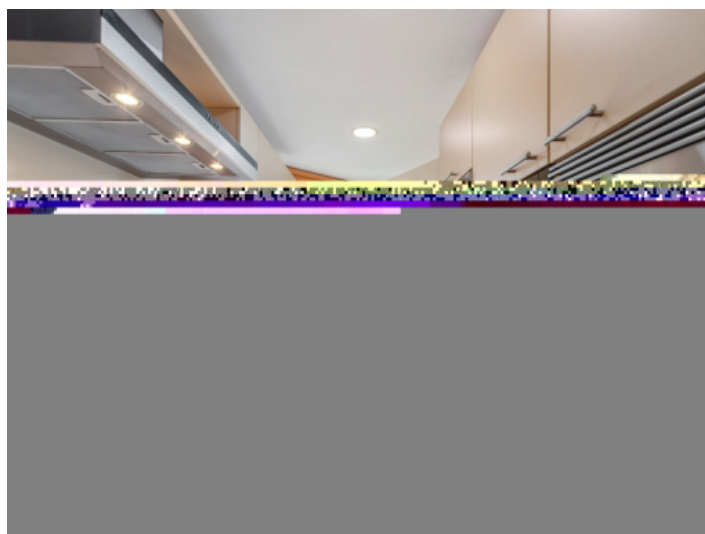


PORTA MONDIAL®

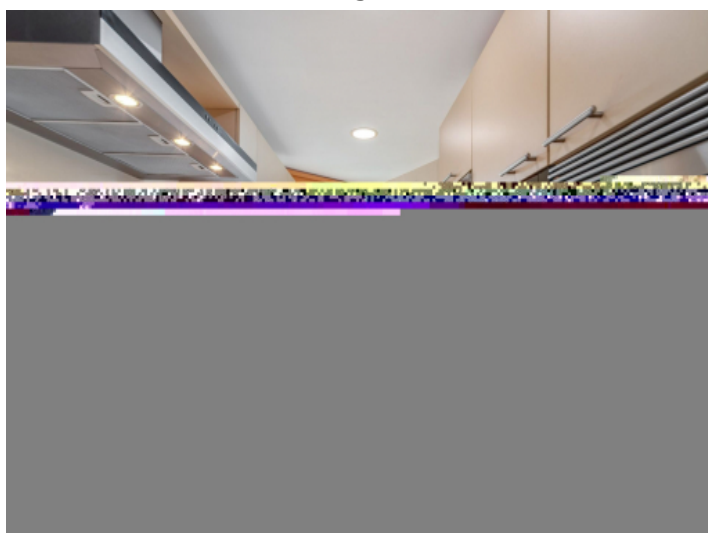
Your home. Our passion.



Dining area



Kitchen



Kitchen



Master bedroom



Master bedroom



Bathroom en suite



# Ciudad Jardin

search for property MAL-121229

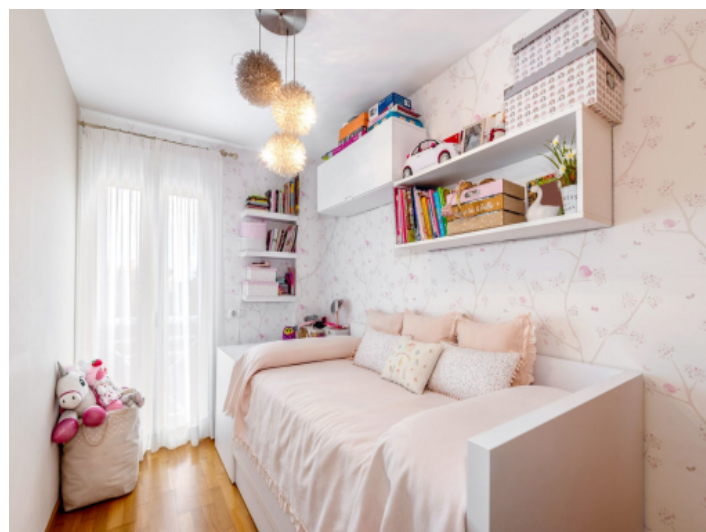


PORTA MONDIAL®

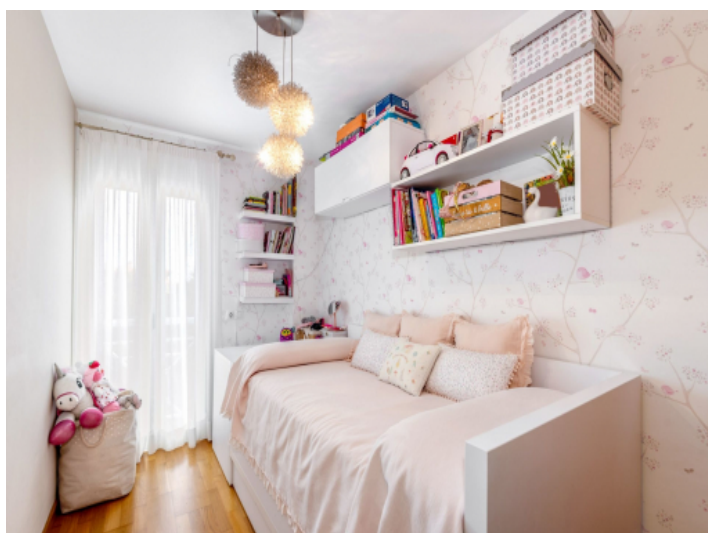
Your home. Our passion.



Bathroom en suite



Bedroom



Bedroom



Bedroom



Bedroom



Bathroom



# Ciudad Jardin

search for property MAL-121229



PORTA MONDIAL®

Your home. Our passion.



Bathroom



Terrace



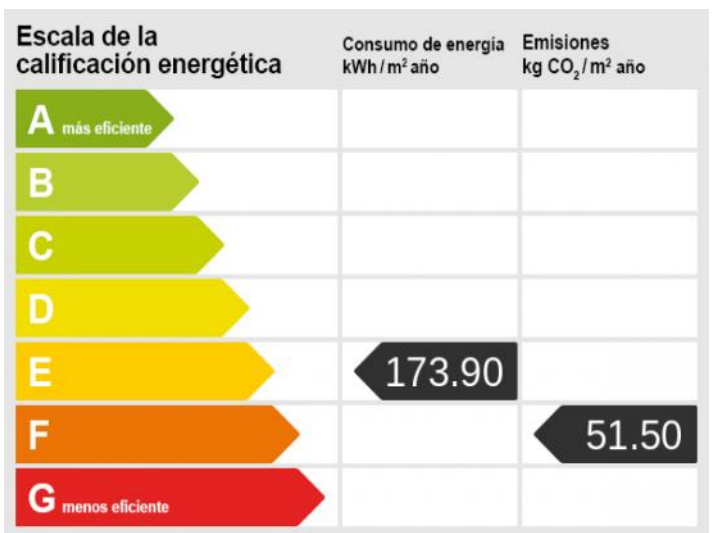
Terrace



Terrace



Terrace



Energieskala



# Ciudad Jardin

search for property MAL-121229



PORTA MONDIAL®

Your home. Our passion.

Escala de la calificación energética	Consumo de energía kWh/m <sup>2</sup> año	Emisiones kg CO <sub>2</sub> /m <sup>2</sup> año
<b>A</b> más eficiente		
<b>B</b>		
<b>C</b>		
<b>D</b>		
<b>E</b>	173.90	
<b>F</b>		51.50
<b>G</b> menos eficiente		

Energieskala