

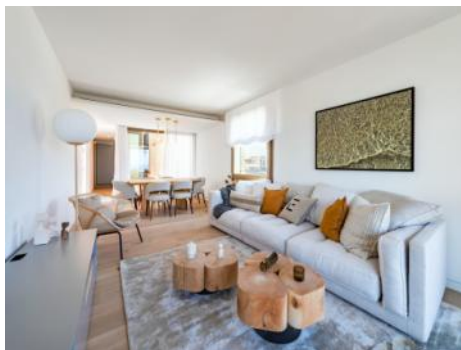
Bonanova

search for property MAL-116632



Exclusive, luxurious, high-quality, 2-bedroom duplex penthouse with sea views and pool in Bonanova

constructed area:	136 m ²	swimming pool:	✓
bedrooms:	2	energy certificate:	in process
bathrooms:	3		
balcony/terrace:	✓		
sea view:	✓	price:	€ 1,825,000.-



Bonanova

search for property MAL-116632



Details:

'Parallel East & West' presents itself with 2 innovative buildings, each with 6 luxury apartments which offer the option of either a private swimming pool, a garden or a roof terrace with panoramic views over the bay of Palma, Cala Major and Illetas.

Aesthetic architecture, contemporary but respectful sustainability, highest energy efficiency level, and harmony with the natural environment have been combined with outstanding niveau in this very special residential project.

The collection of buildings is located between "Panorama Palma Bay" and "Bellver Castle".

This duplex penthouse has a total area of 136 sqm distributed over 2 bedrooms with bathrooms en suite, a guest WC, a utility room, a dressing area, and a large kitchen and living area with terrace. The spacious roof terrace with panoramic sea views has an outside summer kitchen with seating area and a pool with an area for sunbathing.

Further features include a fully equipped, air-conditioned fitness area and 2 garage parking places with storage room.

The orientation is to the east and the west.

Bonanova

search for property MAL-116632



Location & surrounding area:

Due to its elevated location, bordering with the wonderful Parc de Bellver with the famous Bellver castle, the beautiful area of Bonanova provides wonderful views over the whole of the bay of Palma, the open sea and the mountains.

This villa district, although centrally located and with superb connections to the centre of Palma by car or bus, is one of the quietest and most secure districts of Palma. It offers, therefore, the possibility to live in a peaceful area but still be able to easily enjoy all the facilities of the town with its restaurants, bars, cafes and shops.

In addition this neighbourhood itself offers exquisite gastronomy, supermarkets, sports locations and clinics, all close by. The shopping centre of Porto Pi, for example, is only a few minutes away by car and offers a huge choice of shops and restaurants. Lovely beaches such as that in Cala Major are also only a few minutes away by car. Bonanova, furthermore, is also ideal for children with the 'Queen's College' which enjoys an excellent reputation internationally.

Bonanova
search for property MAL-116632



Exterior view of the building



Open living and dining area



Picturesque roof top terrace with pool



Light flooded living area with balcony and sea views



Inviting living area



Stylish living area

Bonanova

search for property MAL-116632



PORTA MONDIAL®

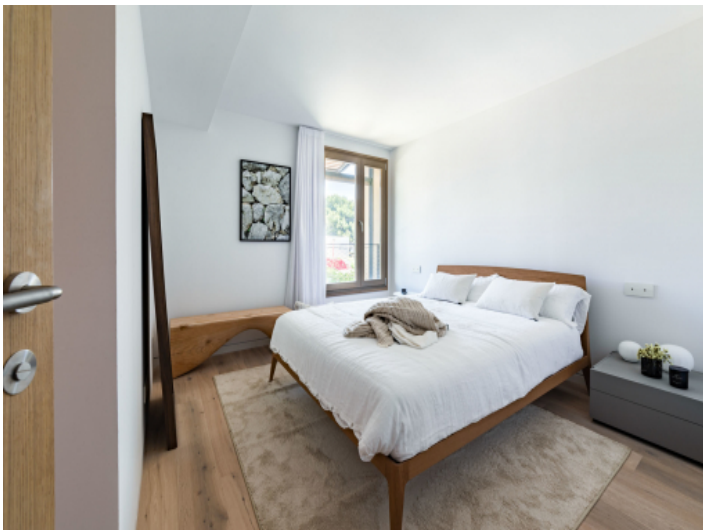
Your home. Our passion.



Fully equipped kitchen with cooking island



Modern kitchen



Spacious double bedroom



Cozy bedroom



Spacious double bedroom



Noble bathroom en suite with walk-in shower

Bonanova
search for property MAL-116632



Exterior view from the street



Fantastic sunny roof top terrace with dining area



Fitness area with air condition



Floor plan apartment

APARCAMIENTOS Y TRASTEROS
PLANES SÓLOMO
SUPERFICIE ÚTIL: 100,00 m²
SUPERFICIE CONSTRUIDA: 100,00 m²
SUPERFICIE TOTAL: 100,00 m²



Floor plan basement

Escala de la calificación energética	Consumo de energía kWh/m ² año	Emisiones kg CO ₂ /m ² año
A más eficiente		
B		
C		
D		
E		
F		
G menos eficiente		

EN TRÁMITE

4f20c3b1-874b-4b6f-a0ba-59bbc254c257